

The Kährs logo is displayed in white text on a red square background. The word "Kährs" is written in a bold, sans-serif font, with a registered trademark symbol (®) to the upper right of the letter 's'.

Kährs®

WOODLOC® STAPLE DOWN INSTALLATION INSTRUCTIONS

Applicable to:

Kährs Avanti	13mm	1/2"
Kährs Original	15mm	5/8"

Kährs International
317 Northlake Blvd. Suite 1016
Altamonte Springs, FL 32701
Tel : 1.800.800.5247
Fax : 407.260.9933

info@kahrs.com www.kahrs.com

PROTECT YOUR INVESTMENT!

Maintain your warranty:
Only use Kährs branded
underlayments,
moldings, cleaning
supplies, and
accessories.



Note: These directions are based on industry standards and best practices. Warranty coverage may be lost due to failure to strictly follow all installation instructions and recommendations and/or the use of improper materials or tools. For complete warranty information visit www.kahrs.com or call 1-800-800-5247.

READ ALL INSTRUCTIONS CAREFULLY!

THANK YOU FOR CHOOSING KÄHRS FLOORING!

STAPLE-DOWN INSTALLATION FOR Woodloc® PRODUCTS

NOTES:

- Kährs flooring is covered by a Limited Lifetime Warranty. However, warranty coverage may be lost due to failure to strictly follow all installation instructions and recommendations or the use of improper materials or tools. **READ ALL INSTRUCTIONS CAREFULLY.**
 - Always begin a Kährs Woodloc® installation with the tongues facing the wall!
 - Proper expansion must be left at all walls.
 - Read Woodloc® 5G and 5S Float-In instructions to familiarize yourself with proper end joint locking techniques.

IMPORTANT!

- **Do not open packages until ready to begin installation!** Inspect boards before installation. Kährs flooring is sealed at the factory with a 7% moisture content. Opening cartons to acclimate the flooring (as with some solid strip flooring) could result in a difficult installation.
- As an installer, it is your responsibility to be aware of the grade, Relative Humidity of the room, and moisture content of the subfloor. You should check that each plank is free of damage or manufacturing defects. Any unusable boards should be set aside for later replacement.
- Flooring should be installed perpendicular to joists to prevent subfloor sagging. The subfloor must be reinforced to nail down Kährs parallel to joists.
- It is the installer's responsibility to be aware of the grade, Relative Humidity of the room, and Moisture Content of the subfloor. You should check that each plank is free of damage or manufacturing defects. Any unusable boards should be set aside for later replacement.
- When possible, preselect and set aside boards that blend best with all horizontally mounted moldings (reducer/stair nose etc.) This will ensure a uniform final appearance. Install these boards adjoining the moldings.
- Always install the floor from several cartons at the same time to ensure good color and shade mixture.
- Do not use rubber mallets or hammers on the finished edge of the floors.
- The use of adhesive tape on any Kährs floor for any reason (i.e., to fasten temporary protection) is not recommended and is not covered in our warranty.

PRIOR TO INSTALLATION

- **See *Jobsite/Subfloor Preparation* document on webpage and follow all requirements before installation.**
- Door casings should be notched or undercut to avoid difficult scribe cuts.
- Sweep or vacuum subfloor thoroughly.
- Once subfloor has been prepared, Kährs recommends covering subfloor with 15 lb. or higher asphalt felt or rosin paper to retard moisture and help alleviate any remaining variations.

WARNING! INSTALLERS

WARNING: Drilling, sawing, sanding or machining wood products can expose you to wood dust, a substance known to the State of California to cause cancer. Avoid inhaling wood dust or use a dust mask or other safeguards for personal protection. For more information go to www.P65Warnings.ca.gov/wood.

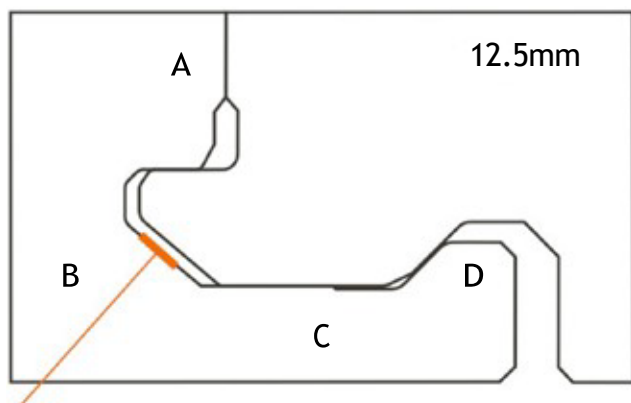
Precautionary Measures: If power tools are used, they should be equipped with a dust collector. If high dust levels are encountered, use an appropriate NIOSH-designated dust mask. Avoid dust contact with eye and skin.

First Aid Measures in Case of Irritation: In case of irritation, flush eyes or skin with water for at least 15 minutes.

Staple-Down Installation for Woodloc® Products

1. Background

A principle description of nailing down wooden floors. A modified fitting of a nail gun special designed to be compatible with a 12,5mm (in this case) board with mechanical locking system. The nail is placed inside the groove on surface B (see fig. 1).



- A. Finish cut surface
- B. Inner groove
- C. Locking strip
- D. Locking element

Fig. 1 Placing of the nail in the locking system

2. Changes Made:

In order to place the nails at the correct position following changes have been done:

- The front block (E) is changed to a 40° angle and adjusted in thickness to place the nail at the right height position. The flat surface of the block is also enlarged to get a more stable position.
- In order to get close enough to the finish cut surface (F) and (G) has also been modified as well as the length of the security pin.
- The top block (H) has a 40° angle and the whole tool should be placed flat on the board over the groove before nailing.

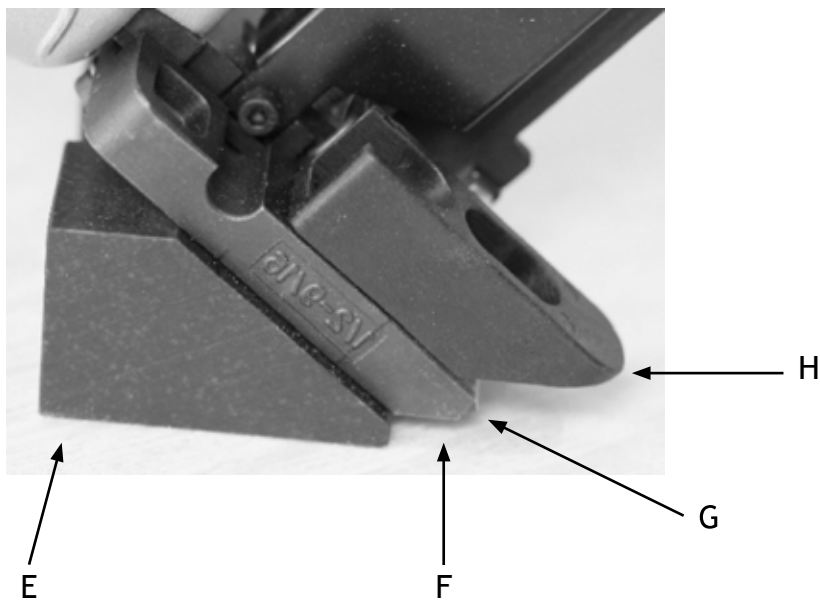
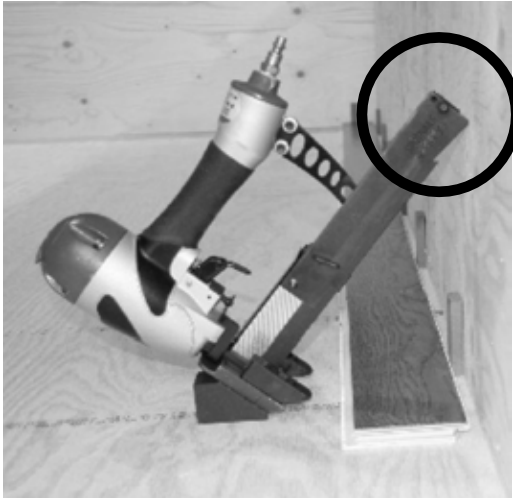


Fig. 2 Changes made to the positioning block

Staple-Down Installation for Woodloc® Products

3. How To Use

- A. First row is nailed manually.



Due to the design of the nail gun where the magazine prevents the machine to be placed correct the first row needs to be nailed manually.

Fig. 3 Magazine design prevents the 1st row from being mechanical nailed



Fig. 4 Nail manually inserted



Fig. 5 Carefully lowered



Fig. 6 Nail is completely lowered



Fig. 7 Done!

Staple-Down Installation for Woodloc® Products

4. From 2nd Row

A. Tool position

Place the nail gun over locking strip, the lower block should be placed flat on the subfloor and the top block should be in contact with the top surface in order to get the right positioning of the nail.

When positioning the nail gun it has to be lifted over the locking element in order not to damage the locking element. As soon as the security pin is placed on top of the locking element it can easily be slid into the groove and it finds its right position without problems.

B. Nail positioning

Kährs recommends that the nails are placed 3 ½ - 4" from the short side edge in order to prevent the risk of making any vertical production tolerances on the short side more noticeable.

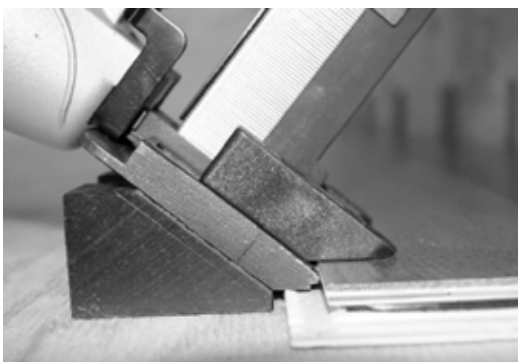


Fig. 8 Nail gun correct positioned



Fig. 9 Nail gun lifted over the locking element



Fig. 10 Placed before locking element
(The right top block is removed on this picture)



Fig. 11 Lifted up



Fig. 12 Placed on top of the locking element



Fig. 13 Pushed in to the groove = correct position

5. Problems That Can Occur

- If the nail gun is not correctly positioned problems with nails that are not completely lowered can appear. (Fig 14)
- If the nails are inserted in an incorrect angle, problems with shattered fibers from the finish cut surface can appear.

In both cases the result will be that the next board cannot be installed correctly. Shattered fibers can be removed by scraping with a knife, and nails have to be lowered completely manually.

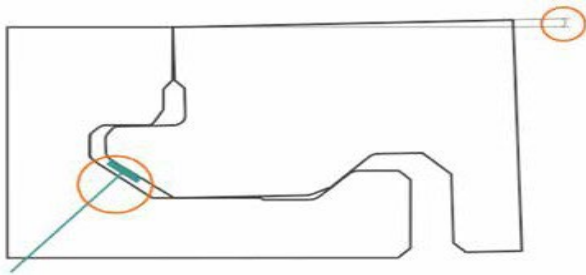


Fig. 14

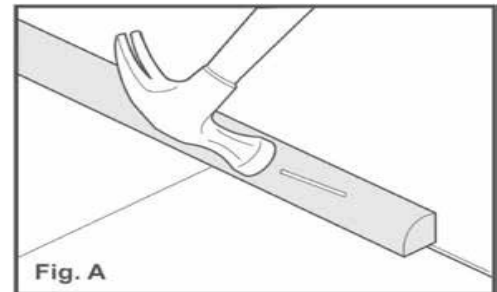
Final Steps

After Installation:

- Remove expansion shims and use required Kährs moldings and/or trim pieces to cover expansion space (Fig. A). Always nail moldings to wall, **never** to flooring.

Clean Up:

- Immediately clean any debris such as wood chips, saw dust etc. that were left on wood flooring during installation.



Maintenance:

- Clean floor using dry dust mop or damp (lightly misted or well rung out) mop or cloth Regularly use Kährs Wood Floor Cleaner for best results. Do not use oil soap or water-emulsion, self polishing waxes. **NEVER** wet mop floor. Place Peel & Stick Floor Protectors on furniture legs to prevent damage.
- See Kährs Floor Care Guide & Lifetime Guarantee for details (available at www.kahrs.com).

Note: Oil Finish Floors must be oiled with Kährs Satin Oil immediately after installation and prior to use.

Relative Humidity in the room

Maintain the Relative Humidity levels within 30%-60% range to avoid unwanted climate-related damage and movements in the wood floor, e.g., cracks, gaps, noise, cupping etc. In summer you may need to dehumidify the air, while in winter it may instead be necessary to increase the humidity in the air. At a too high or too low Relative Humidity, permanent shape changes of the wood floor can occur. It is important to ensure that even in empty and uninhabited spaces, the temperature and humidity are correct. This is especially important when installing in connection with e.g., new constructions or major renovations.

Damage caused by failing to maintain the proper humidity levels is not manufacturing related and will void the floor's warranty.

Not only do wood floors thrive best with a relative humidity in this range, but also us, as humans thrive due to better indoor air quality.

Adhesive Tape on Kährs Floors:

The use of adhesive tape on any Kährs floor for any reason is not recommended and is not covered in our warranty. After installation, if a protective cover over the floor is needed, cover the floor completely. Do not use plastic. Any protective covering should be taped, using a low-adhesion tape, to base or shoe moldings. When taping paper or sheets together, tape them to each other, not to the floor. NEVER apply tape to finished flooring. Do not allow the floor covering to sit on the installed floor for an extended period.

Additional Finishing Coating:

For additional wear protection, a waterborne urethane finish is compatible with Kährs factory finishes. Contact Arboritec or Bona Kemi USA, Inc. for recommended products, application, and warranty information. Follow manufacturer's instructions for recoating a prefinished wood floor. Kährs does not guarantee the performance and/or durability of these products.

Color change

Wood is a natural material that gradually matures to its natural color, this change occurs fastest immediately after installation. To avoid uneven color change, carpets should not be laid on the floor during the first few months after installation of the floor.