

# Kährs®

QUALITY IN WOOD SINCE 1857

## REPAIR GUIDE

---

# CONTENT

**GENERAL RECOMMENDATIONS ON PARTIAL REPAIR PAGE 4**

**REPAIR OF SMALL SURFACE DAMAGES, CRACKS AND DENTS PAGE 6**

**GLUING OF UNLOCKED WOODLOC 5S JOINTS PAGE 7**

**REPLACEMENT OF BOARDS PAGE 8**

Replacing boards with Woodloc® joint

Replacing boards with Woodloc 5S® joint

Replacing glued T&G boards

**CLEANING AND MAINTENANCE PRODUCTS - DESCRIPTION PAGE 11**



## SERVICE AND REPAIR OF KÄHRS WOOD FLOORS

To retain the original durability and beautiful appearance, Kährs wood floors should be maintained following a simple regime. This information will be available in the *Kährs Maintenance guide* which can be found on [www.kahrs.com](http://www.kahrs.com)

This guide will give a description of the complete range of service and repair products useful to the professional floor layer. This document will give guidelines and recommendations that will enable a professional floor layer to perform small repairs of indentations, correct unlocked Woodloc 5S® and Woodloc 5G® joints.

We will also inform and guide on how to manage a complete replacement of damaged boards on a traditional T&G joint and on the Kährs Woodloc 5S® joint.

## GENERAL RECOMMENDATIONS ON PARTIAL REPAIR - LACQUERED FLOORS

### REPAIRS

#### Partial repairs to multi-layer parquet and Kährs Life:

- Treat small surface scratches and scrape-marks with Kährs Lacquer Refresher. On deeper scratches, use Kährs Touch-up Lacquer first.
- Fill small indentations that have cracked the surface with Kährs Touch-up Lacquer. Dirt can collect in the “hollows” on brushed products. Remove dirt from individual areas using a small brush and Kährs Spray Cleaner. Apart from that, look after floors with brushed boards just like other lacquered products. Re-lacquer these floors with Kährs Lacquer. The brushed parts naturally hold more lacquer, and will retain their brushed appearance even after re-lacquering, if somewhat less so. Kährs Lacquer Refresher can be used for maintenance, but the gloss level will gradually increase.
- Fill deep dents, scratches, and cracks with wood filler or Kährs Hot-Melt Wax in a matching color, then lacquer with Kährs Touch-up Lacquer. Strips or boards with major damage can be replaced.

### RENOVATION

#### Renovating surface treatment on wood floors:

Micro scratches: If small areas of the lacquer have been scratched (by chairs, tables etc.) the floor can be treated with Kährs Lacquer Refresher. This conceals the micro scratches. Damp cleaning gradually removes the Lacquer Refresher.

Partial repairs to Kährs multi-layer parquet and Life: If a small area is damaged, worn through or needs to be repaired for any other reason, it is best to replace the damaged boards. This is easy with the Woodloc® joint. This applies particularly to stained or special finish boards.

It is important to maintain stained products in good time. Do not allow the stained finish to wear.

#### Renovation with Kährs Lacquer (re-lacquering):

The main reason for re-lacquering is that after many years' use, the floor needs to be “freshened up”. The surface to be lacquered must be cleaned thoroughly with Kährs Spray Cleaner. If the floor surface is heavily contaminated, use a rotary floor scrubber (red pad) and Kährs Remover to ensure that the floor is free from grease and dirt. Remove all Kährs Lacquer Refresher using Kährs Remover. Then rub down any residues of Refresher using fine (150 grit) sandpaper or a sanding disc (150 grit) before re-lacquering. During re-lacquering, the temperature in the room and of the lacquer must not be lower than 14°C. The entire floor area must be re-lacquered to prevent the formation of ridges of lacquer. Apply the lacquer using a roller or lacquer brush. When re-lacquering, one coat is enough to cover joints and protect from water.

Remember that the surface to be re-lacquered must not have been treated previously with wax, polish, etc. This prevents adhesion, which would mean that the floor would have to be sanded down to bare wood.

Before re-lacquering, apply lacquer onto a sample area to test adhesion. If the floor has been re-lacquered previously, follow the lacquer manufacturer's instructions. If the floor is likely to be subjected to heavy wear, apply several coats of lacquer.

The floor can be walked on carefully approx. 8 hours after lacquering. Rugs can be laid on the floor one week after lacquering. Be careful with spilt water on the newly lacquered surface during the first week, because this can cause permanent stains. Always follow the instructions for the specific product.

**Note that re-lacquering produces a more “plastic” surface appearance than a factory-lacquered floor, and that scratches are more visible because the lacquer used for re-lacquering is less scratch-resistant. Re-lacquering is not carried out in a dust-free environment, so there is a risk that dust particles will adhere to the surface and form little bumps that are visible when the lacquer dries.**

#### Total renovation of a wood floor:

If the floor is heavily worn, or needs renovation for some other reason, it can be machine-sanded to bare wood and have a new surface treatment applied.

**Note. Kährs Life cannot be sanded.**

Particular attention must be given to stained products or products with special finishes. Follow the lacquer manufacturer's instructions.

**! Underfloor heating must be switched off during re-lacquering.**

**! When a factory-finished floor that has been glued down using an MS polymer is re-lacquered, the bond between the new coat of lacquer and the factory-finished lacquer cannot be guaranteed.**

**Note. Any sanding of wood floors includes a risk of delamination of the wood veneers.**

**This should always be communicated, in writing, to the consumer, prior to starting the renovation job.**

## GENERAL RECOMMENDATIONS ON PARTIAL REPAIR - OILED FLOORS

### RENOVATION

After extended use, it may be necessary to renovate the surface treatment and replace it with a new oil treatment. For very dirty non-stained floors:

1. Clean the floor and make sure that loose particles are removed.
2. Apply the Kährs Satin Oil to the surface and spread out evenly and plentifully using a Yarn Mop.
3. Buff the floor with a green disk pad.
4. Remove any excess oil using a rubber squeegee or cloth.
5. Let the surface rest until the oil has dried (about 30 minutes)
6. Buff the floor with a cloth applied on a white disk pad to remove any excess oil.

Repeat the last step if needed. Please observe that two layers of thin oil gives a better result than one thick layer. Applying too high amount of oil will result in a sticky surface. After a drying time of 5 hours the floor can be used with care but needs 12 hours before lighter furniture can be moved back. Wait 24 hours to move back carpets and heavier furniture.

#### Recommended dosage

1 l of Kährs Satin Oil per 400-800 sf<sup>2</sup>

### RENOVATION OF FLOORS WITH HEAVY TEXTURE

After extended use, it may be necessary to renovate the surface treatment and replace it with a new oil treatment.

1. Apply Kährs Cleaner evenly over the surface.
2. Clean the surface using a machine with brush (for example Orbot Machine with a brush). Please note, do not use too hard brush. This will prevent damaging of the wood structure.
3. Dry off the surface using an Absorber Pad or a wet vacuum machine. This will remove cleaner and dissolved dirt from the surface.
4. Leave to dry for 30 minutes.
5. Apply Kährs Satin Oil on the surface with a machine (for example Orbot Machine) using white pad (150-180 rpm)
6. Let the surface rest until the oil has dried (about 30 minutes)
7. Apply a second layer of Kährs Satin Oil on the surface with a machine (for example Orbot Machine) using white pad (150-180 rpm)
8. Let the surface rest until the oil has dried (about 30 minutes)

In the case of heavily worn floors, it might be necessary to repeat step 7 and step 8.

9. Buff the surface with a buffing machine (for example Orbot Machine) using white pad (150-180 rpm). This is done to make sure that the oil has been evenly spread.

Please observe that two thin layers of oil give a better result than one thick layer. Applying too much oil will result in a sticky surface.

#### Recommended dosage

1 l of Kährs Satin Oil per 400-800 sf<sup>2</sup>

### RENOVATION OF STAINED FLOORS

After extended use, it may be necessary to renovate the surface treatment and replace it with a new Tinted Satin Oil treatment.

1. Apply Kährs Cleaner evenly over the surface.
2. Clean the surface using a machine with brush (for example Orbot Machine with a brush). Please note, do not use an aggressive hard brush. This will prevent damaging of the wood structure.
3. Dry off the surface using an Absorber Pad or a wet vacuum machine. This will remove cleaner and dissolved dirt from the surface.
4. Leave to dry for 30 minutes.
5. Apply Kährs Stained Satin Oil on the surface with a machine (for example Orbot Machine) using white pad (150-180 rpm)
6. Let the surface rest until the oil has dried (about 30 minutes)
7. Apply a second layer of Kährs Stained Satin Oil on the surface with a machine (for example Orbot Machine) using white pad (150-180 rpm)
8. Let the surface rest until the oil has dried (about 30 minutes)

If a stronger recoloring is needed, repeat step 7 and step 8. The amount of Stained Satin Oil layers is maximum 3 times, since too thick layers will result in a sticky surface.

9. Buff the surface with a buffing machine (for example Orbot Machine) using white pad (150-180 rpm). This is done to ensure that the oil has been evenly spread.

Please observe that two thin layers of oil give a better result than one thick layer. Applying too much oil will result in a sticky surface.

#### Recommended dosage

1 l of Kährs Satin Oil per 400-800 sf<sup>2</sup>

**Note! The danger of self-ignition exists in contact with organic materials (e.g. cotton cloths, saw dust, absorbing insulation materials etc.) due to self-drying oil content. Rags and other organic materials soaked in oil must be put into water immediately after use, in order to avoid self-ignition.**



## REPAIR OF SMALL SURFACE DAMAGES, CRACKS AND DENTS

In the case of repairing deep dents, scratches and cracks, the edges of the damaged areas must first be cleaned from sharp edges and loose particles. This is done using a scalpel.

When repairing dents or similar: you have an option to use putty or Kährs meltable filler sticks.

In the event of repair always follow the instructions on the product packaging.

More information is available on [www.kahrs.com](http://www.kahrs.com).

MINOR SCRATCHES AND SCUFF MARKS

MINOR INDENTATIONS

DEEP DENTS, SCRATCHES AND CRACKS

LACQUERED FLOORS



OILED FLOORS



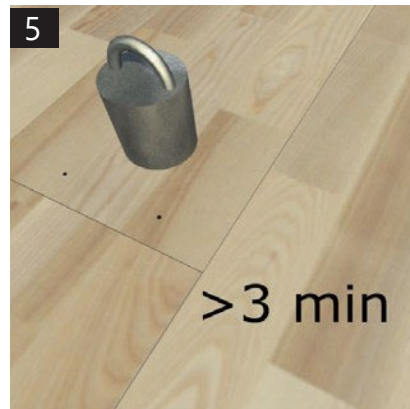
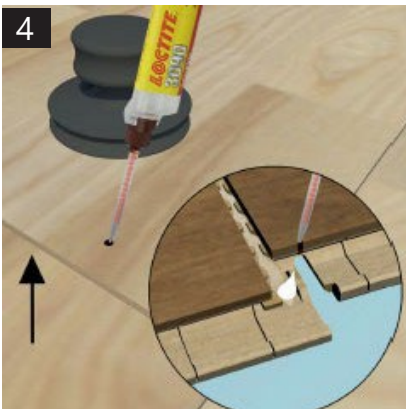
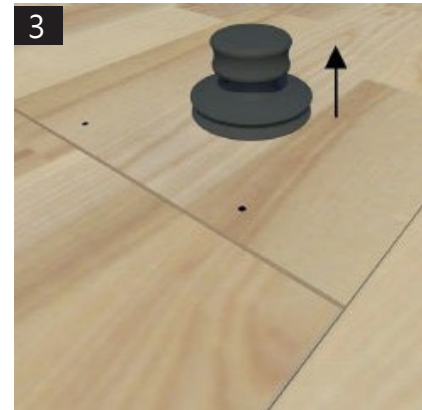
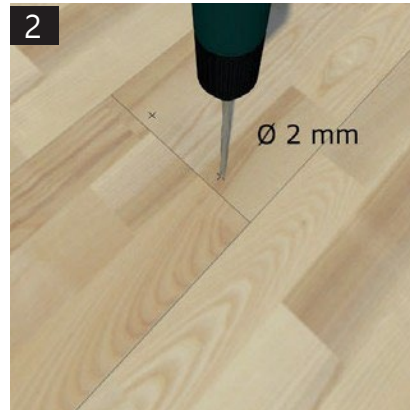
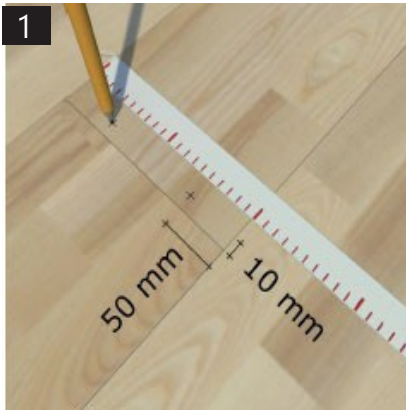
## GLUING OF UNLOCKED WOODLOC 5S JOINTS

In case of an unlocked Woodloc 5S joint, this is a simple way of rectifying the problem.

1. Mark at the tongue side of the board according to picture.
2. Drill 10-12 mm depth into the board. Note, the drilling depth is important, you have to drill in order to reach the cavity (see picture 4).

3. Lift up the board using a suction cup.
4. Inject glue into the drilled holes while continuing lifting the board.
5. Put pressure immediately after injecting glue. Maintain pressure for at least 3 minutes.

Repair the drilled holes using Kährs meltable filler sticks.



Recommended glue: Loctite 3090



## REPLACEMENT OF BOARDS, WOODLOC

### Replacing boards with Woodloc® joints, option 1

The best method is to lift the boards up to the damaged board, replace the damaged board and then re-lay the lifted boards. For best results, re-use a board that was laid near the damaged one, because it will be a similar color and have comparable wear. Install the new board where its “brand new” color is less obvious, e.g. near a wall. With the Woodloc® joint, you can lay from the front or the back, and from left to right or vice versa.

### Replacing boards with Woodloc® joints, option 2

1. Saw through the damaged board along its center line. Saw a “V” at each short end.

2-3. Pick out the pieces of old board.

4. Cut away the locking molding on the underlip on both the long and short sides. Check that the new board fits.

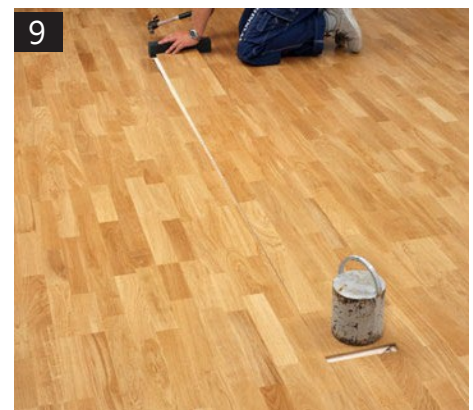
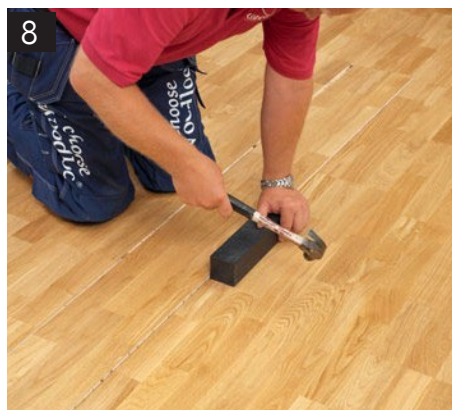
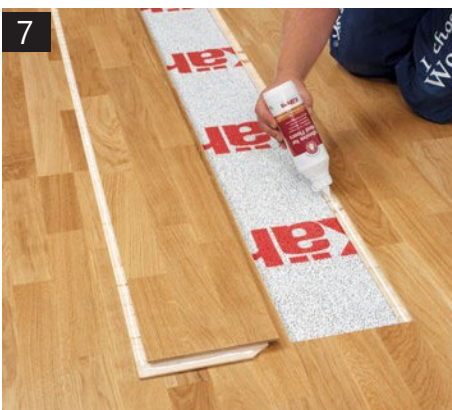
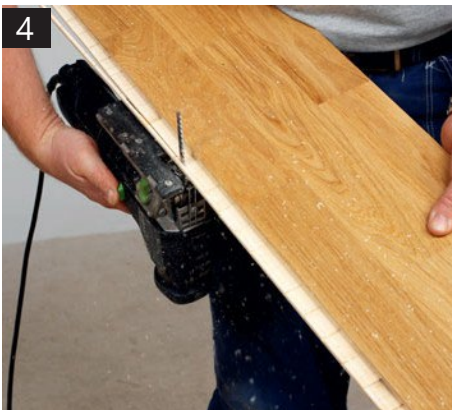
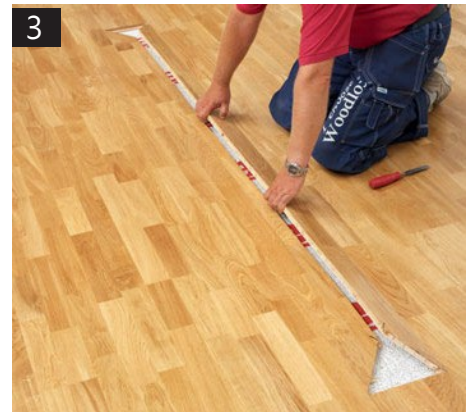
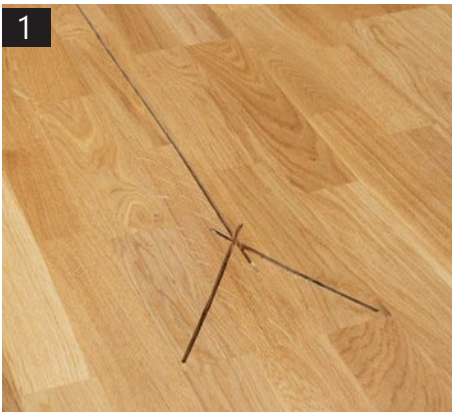
5. Cut off the tongue on the long and short sides. Lightly sand (0,5 mm) the tongue to allow room for the adhesive.

6. Cut the corner on the short side at an angle.

7. Apply Kährs Adhesive to the underlips of the surrounding boards and the replacement board.

8. Tap the new board in place using a Kährs Hand Block, beginning on the long side.

9. Then push the board in sideways. Then tap in the whole of the long side. Place the old board on top of the new one - on the tongue side - and apply pressure while the adhesive dries. The wide contact area for the adhesive makes the joint sufficiently strong.





## REPLACEMENT OF BOARDS, WOODLOC 5S

If a board is severely damaged and needs replacing, follow the illustrations below.

Replacing boards with Woodloc 5S joints, option two

1. Saw through the damaged board along its center line. Saw a "V" at each short end.

2-4. Pick out the pieces of an old board. Use a sharp chisel and make sure you don't damage the adjacent boards.

5-6. Cut away the locking molding on the underlip on both the long and short sides. Check that the new board fits.

7. Cut off the tongue on the long and short sides. Lightly sand (0,5 mm) the tongue to allow room for the adhesive.

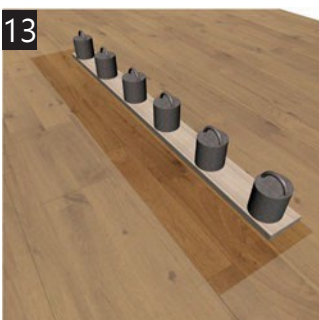
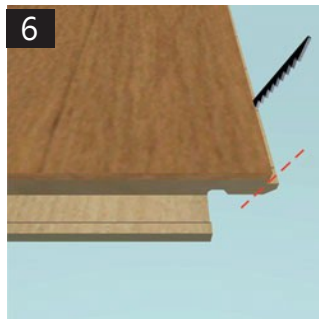
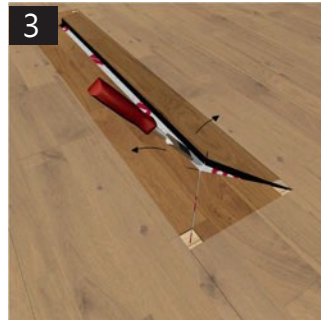
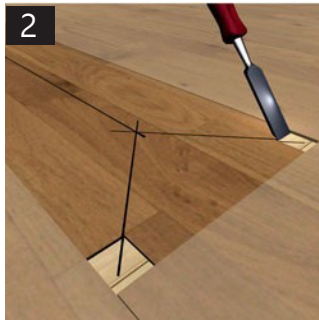
8. Cut the corner on the short side at an angle.

9. Apply a new locking pin on the groove side of the new board.

10. Apply Kährs Adhesive to the underlips of the surrounding boards and the replacement board.

11-12. Tap the new board in place using a Kährs Hand Block, beginning on the long side. The positioning of the new board will be easier if you apply a weight to the far end of the board. Then push the board in sideways. Then tap in the whole of the long side.

13. Place the old board on top of the new one - on the tongue side - and apply pressure while the adhesive dries. The wide contact area for the adhesive makes the joint sufficiently strong.

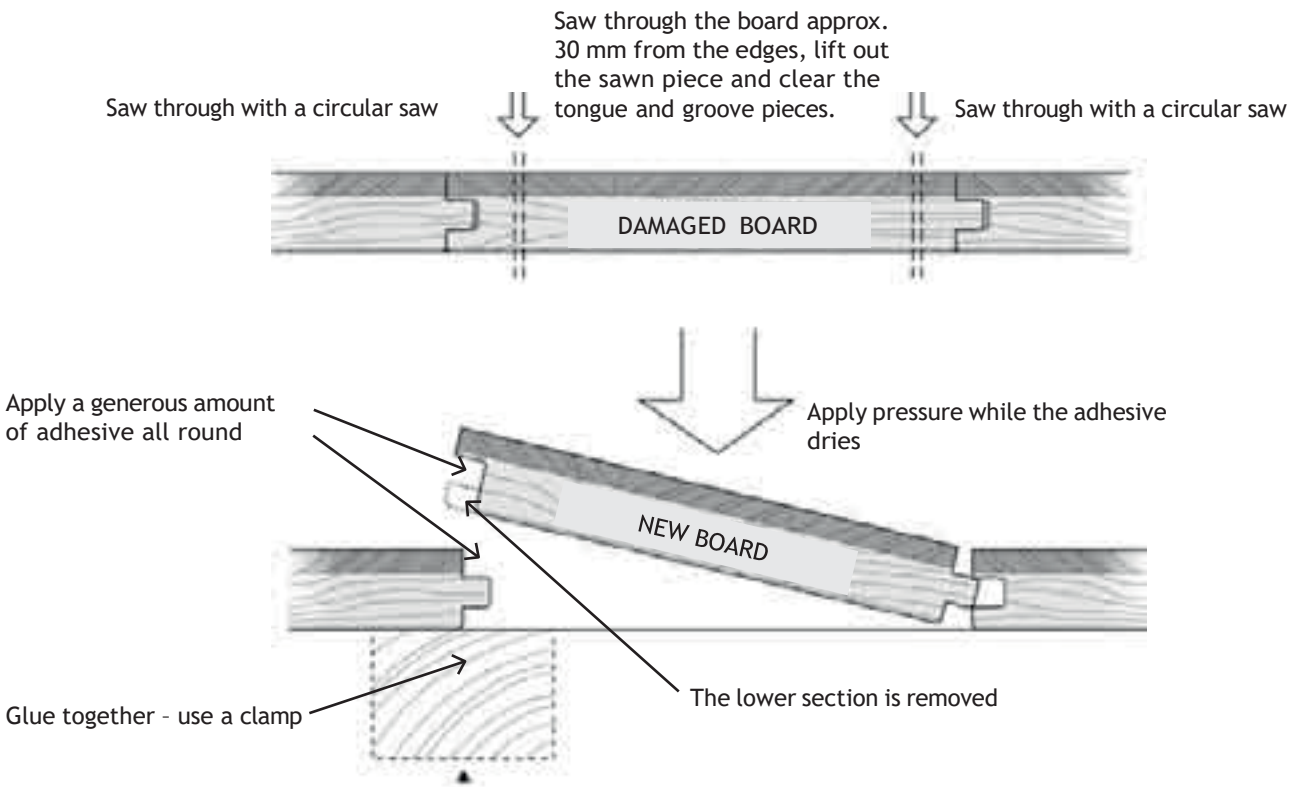


## REPLACEMENT OF BOARD, GLUED T&G

### Replacing tongue and grooved boards

Where there is major damage involving several wear surface strips, one or several boards may need to be replaced as follows: Saw through the damaged board all round, approx. 30 mm from its edge. Lift out the sawn piece and clear the remaining tongue and groove pieces from the surrounding material. It is simple to check with a piece of board that no adhesive residue remains. Check that the new board is the correct length. Cut off the lower section of the groove on both the

long and short sides. After testing the fit and making any necessary adjustments, apply glue to the board and place it in position (see illustration). Place the old board on top of the new one - on the tongue side - and apply pressure while the adhesive dries. Multiple boards can be replaced using the same method.



## CLEANING AND MAINTENANCE PRODUCTS - DESCRIPTION

---

MORE DETAILED INFORMATION ABOUT EACH PRODUCT IS AVAILABLE TO BE DOWNLOADED FROM [WWW.KAHR.S.COM](http://WWW.KAHR.S.COM)

### KÄHRS SPRAY CLEANER 0,75 LITER

- effective cleaner for lacquered and oiled floors

Kährs Cleaner is an effective and environmentally friendly product specially formulated for cleaning wood floors.

Does not contain any organic solvents or pigments. For normal daily cleaning. Ready to use.

Art no. 710529



### KÄHRS REMOVER 1,0 LITER

- effective remover of polishes and lacquer refresher

Kährs Remover is a remover for Kährs Lacquer Refresher and Wax based polishes from wooden floors. Kährs Remover can also be used for heavy duty cleaning.

Art no. 710523



### KÄHRS LACQUER REFRESHER 1,0 LITER

- restores finished floors

Kährs Refresher is an easy-to-use refresher for finished parquet and wooden floors. The product gives the wood a protective top surface which simplifies the cleaning and maintenance process.

Art nr. 710522



### SATIN OIL 1 LITER

- clear maintenance oil

Kährs Satin Oil is a hardening urethane oil for maintaining wood and parquet floors. Satin Oil gives the floor a protective oil layer with a beautiful shine. Satin Oil protects by penetrating the floor surface.

Art no. 710553





### STAINED SATIN OIL 1.0 LITER

- tinted maintenance oil

Kährs tinted Satin Oil is a hardening urethane oil for maintaining wood and parquet floors. Satin Oil gives the floor a protective oil layer with a beautiful shine. Satin Oil protects by penetrating the floor surface.

Art no. 710585 Satin Oil Dark-Brown 01, matching for example Romanov

Art no. 710586 Satin Oil Dark-Grey 01, matching for example Ulf

Art no. 710587 Satin Oil Grey-Brown 01, matching for example Sture

Art no. 710588 Satin Oil White 01, matching for example Olof

Art no. 710589 Satin Oil White 02, matching for example Gustaf



### KÄHRS FLOOR CARE KIT

The perfect all in one cleaning solution for your Kährs floor. The kit contains a 0.75 liter bottle of Spray Cleaner, a dry mop, and felt floor protectors.



### KÄHRS MOP PAD

Replacement pad for your Kährs mop to be used only with Kährs Spray Cleaner. Can be machine washed.

Art no. 710512



### KÄHRS REPAIR KIT LACQUERED AND VINYL FLOOR

For the repair of scratches, holes, bruises on parquet, veneer parquet, stairs, doors, furniture

Art no:

Repair kit lacquered floor 710577

Repair kit lacquered floor 5 set 710565

Content

- 10x Hard Wax sticks (4cm)
- 1x Special Fillers Applicator including Sanding Pad and small Sanding and Polishing Cloth
- 1x Battery Melter incl. 3 batteries
- 1x Sanding and Polishing Cloth
- 1x Cotton Cloth
- 1x Clear Lacquer Brush Pen as sealing pen (sheen level: silk matt)



## REPAIR KIT OILED FLOOR

For the repair of scratches, holes, bruises on parquet, veneer parquet, stairs, doors or furniture.

Art no:

Repair kit oiled floor 710578

Repair kit oiled floor 5 set 710566

### Content

- 9x Hard Wax sticks (4cm)
- 1x Special Fillers Applicator including Sanding Pad and small Sanding and Polishing Cloth
- 1x Battery Melter incl. 3 batteries
- 2x Sand Paper (grain 150 and 240)
- 1x Special-Oil, 10 ml
- 1x Cotton Cloth
- 1x AQUA Clear Lacquer Brush Pen as sealing pen (sheen level: silk matt)

