



INSTALLATION INSTRUCTION KÄHR'S LUXURY TILES CLICK

GENERAL

The room temperature when installing the floor must be between 64-85 °F, and the relative humidity in the premises is recommend being between 30-60% RH. The flooring material must be acclimated in the room for at least 24 hours before installation. The room temperature must be maintained 48 hours before and continuously during and after installation. If underfloor heating is installed, Kährs LT Click may be exposed to max. 85 °F and the subfloor must be flat and stable.

SUBFLOOR

Kährs Luxury Tiles Click can be installed on most substrates, which must be clean, sufficiently dry and firm, free of yield or movement, free of cracks and flat within 1/8" over 8'.

For a concrete substrate, the max. RH is 85% in-situ during installation, measured in accordance with the current industry standard. Any dust or loose particles must be carefully removed. Any stains or spills from paint, oil or similar must be removed. Any unevenness in concrete floors must be levelled. Levelling compound/filler must be sufficiently firm for the area of application in the premises.

INSTALLATION

Measure the area to be installed and decide on the direction of installation. The width of the first and the last row must be no less than 2". If so, adjust the width of the first row.

Install the floor without adhesive: Kährs LT Click shall always be installed using Floating method, on, above or below grade. Allow an expansion gap around the whole outer border, i.e., also for pipes, stairs, pillars, door frames and thresholds.

Expansion gap and maximum installation area is:

Kährs LT Click 6mm

Max area 5,400 ft², max length / width is 75 ft. Expansion gap of 1/2" on all sides up to 50 ft, 3/4" between 50-75 ft.

Kährs LT Click 5mm

Max area 2500 ft²., max length or width is 50 ft.
Expansion gap 1/4" with length/width of 0-30 and 3/8" between 30-50 ft.

In rooms with quadratic areas (L, F, T, U shapes), separate the areas using an expansion joint, especially by door openings. If you have any questions, please contact your dealer for further information. You can use the floor immediately after installation. The baseboards must be secured to the wall, never to the floor.

MISCELLANEOUS

Color matching between individual tiles cannot be guaranteed. As with natural wood and stone products variation in color is to be expected. Working out of a minimum of two cartons at a time is recommended.

Even though all material is inspected carefully before delivery, faults can occur. Any deviations (damaged or incorrect floor tiles) must be reported immediately to Kährs and must not be installed but set aside before installation. If you are in any doubt before installation, always consult us. Any returns must always be approved by Kährs, so contact us to make sure they are processed correctly.

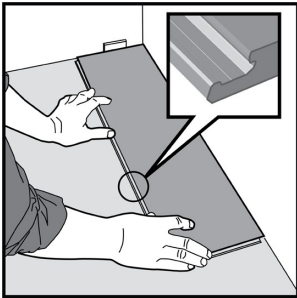
Office chairs that are to be used on Kährs Luxury Tiles Click must be fitted with soft type W castors in accordance with DIN 68131. Also note the firmness requirement for the substrate. Rubber wheels, rubber pads, printing ink from plastic, etc. can discolor the floor and leave permanent marks. Always use pads on furniture to protect the floor against surface damage, scratches, etc.

If construction activity is to continue, place protective covering on newly installed floors. Do not tape the protective cover directly to the floor. The adhesive on the tape can have a negative effect on the floor and some types of adhesives are very difficult to remove.

Please feel free to contact us for additional information.

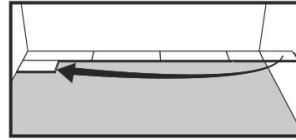
Refer to Kährs LT guarantee for maintenance and guarantee details.

INSTALLATION OF KÄHRS LUXURY TILES CLICK



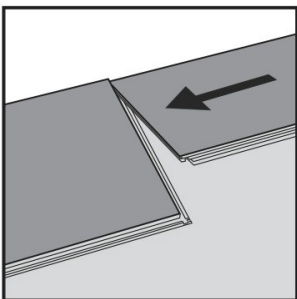
1.

First tile, first row.
Place the plank against the wall with 1/2" distance from the wall on the left.
Later, after 3 rows, you can easily place the floor against the front wall at 1/2".



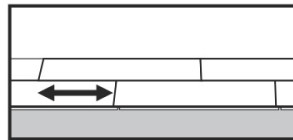
5.

Second row.
The first and last tile must be at least 12". Allow 1/2" expansion gap on all walls and other vertical obstructions.



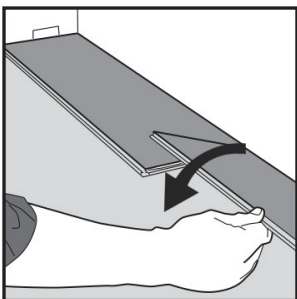
2.

Second tile, first row.
Place the tile carefully and tightly against the short end of the first one.



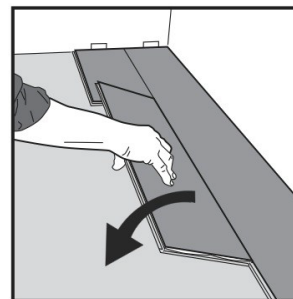
6.

Distances between the short sides.
The minimum distance between the short ends of the tiles in parallel rows may not be any less than 12".



3.

Fold down in one single movement. Check that the tiles are tightly against each other. Press or tap on the newly installed short end. At the end of the first row, leave a distance of at least 1/2" to the wall.

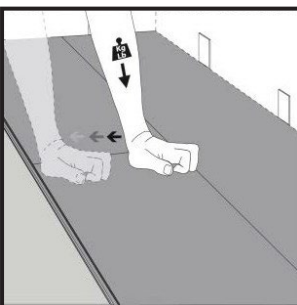


7.

Second tile, second row.
Place the tile carefully and tightly against the short end of the previous tile and fold it down in one single movement.

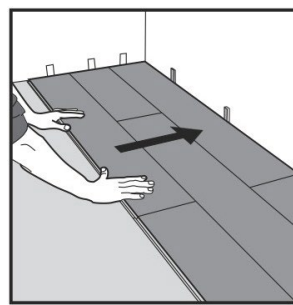
While folding down, check that the tiles are tightly against each other.

Press or tap on the newly installed short end.



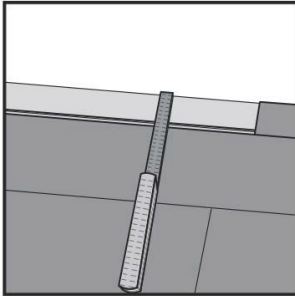
4.

Press down with your hand or tap lightly with a Kährs handblock on the tile you just installed.



8.

After 2-3 rows. Adjust the distance to the front wall by positioning a distance of 1/2".

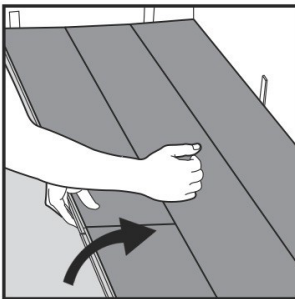


9.

Last row and first.

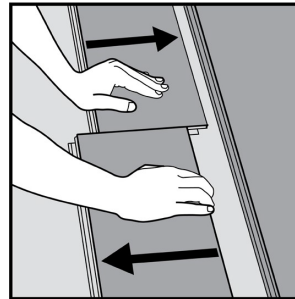
Minimum width 2". Remember the distance to the wall, 1/2". Cut/saw the tiles lengthways and glue the short ends using PVC adhesive.

DISMANTLING FLOOR TILES



1.

Separate the whole row by carefully lifting up and releasing the whole row. Fold up and release the whole long side.

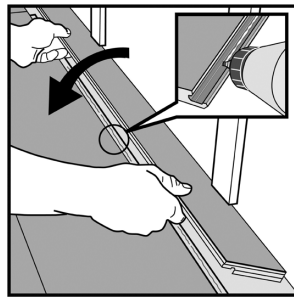
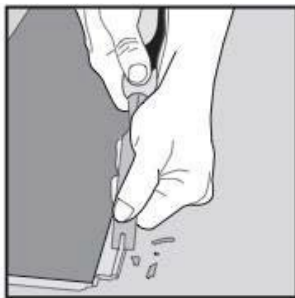


2.

Dismantle the tiles by sliding them horizontally.

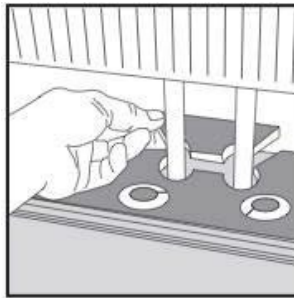
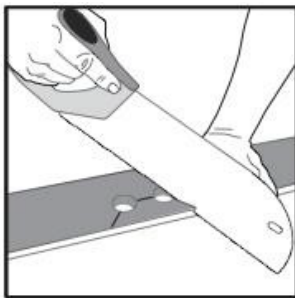
Do not fold up the floor tiles, as this will destroy the locking elements.

SPECIAL INSTALLATIONS - HORIZONTAL INSTALLATION



Cut off locking element using a chisel, apply Landobond (ID# 710225) adhesive to the adjusted strip and press the tiles together horizontally. If necessary, place spacers between the final plank and the wall while the adhesive hardens.

SPECIAL INSTALLATIONS - RADIATOR PIPES



Installation around radiators. Drill holes 1/2" bigger than the diameter of the pipes. Glue together the block behind the pipes.